

EzWedge Stand-Alone Private Network



Table of contents

Private Network Kit Part# 1001	3
Setup Steps For Private EzWedge Network	3

2. Plug yellow LAN cable supplied with router to the USB Ethernet Adapter



3. Plug Yellow Ethernet cable to LAN Port 1 of the Router.



4. Attach Blue Ethernet cable to LAN Port 2 of the Router.



5. Plug other end of Blue Ethernet cable to the EzWedge supplied Portsmouth Adapter.

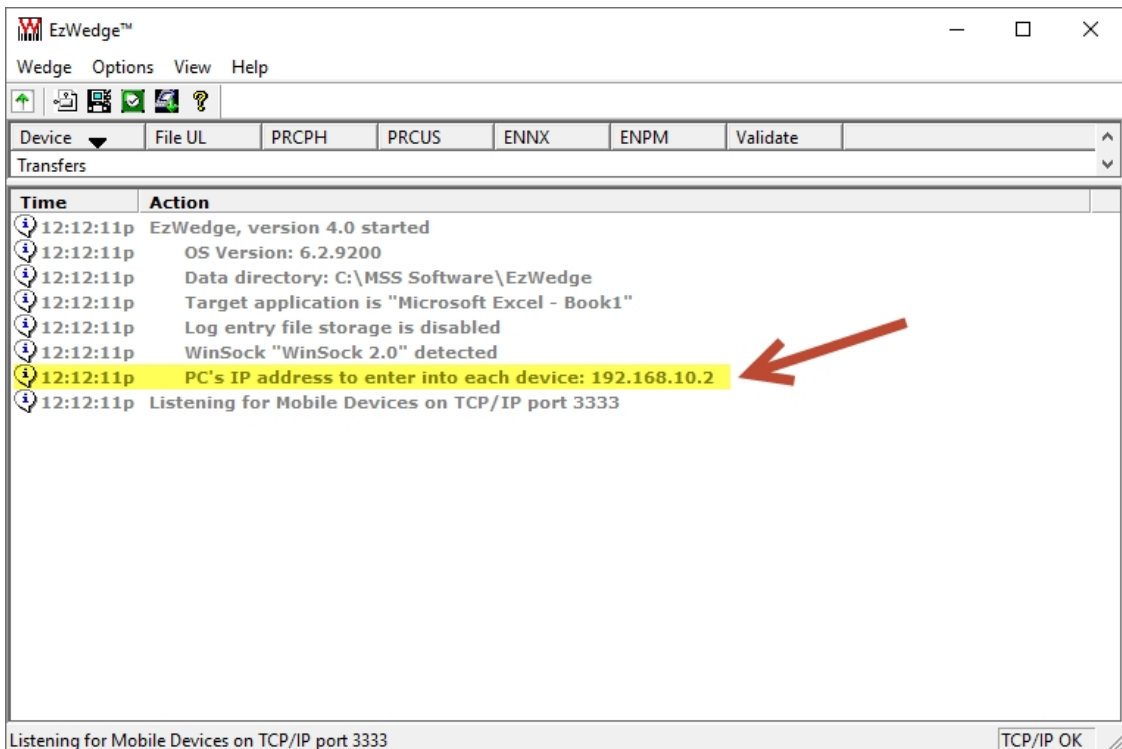


6. Plug the supplied USB cable (short cable) to one end of Portsmouth Adapter and other end into CK3 Dock (attach to side of the dock, not the back).

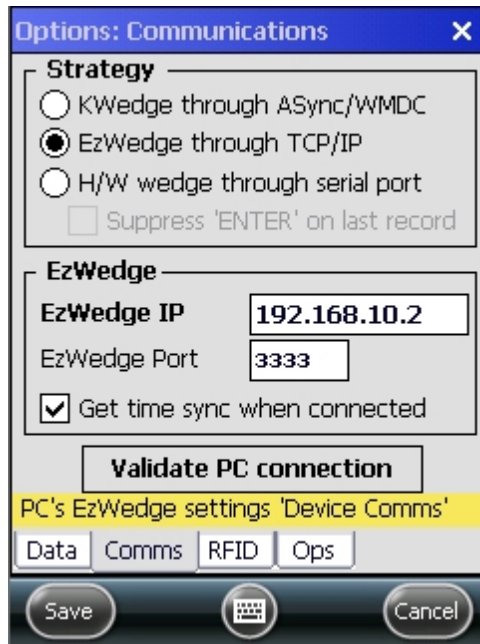
- Complete setup should look like this.



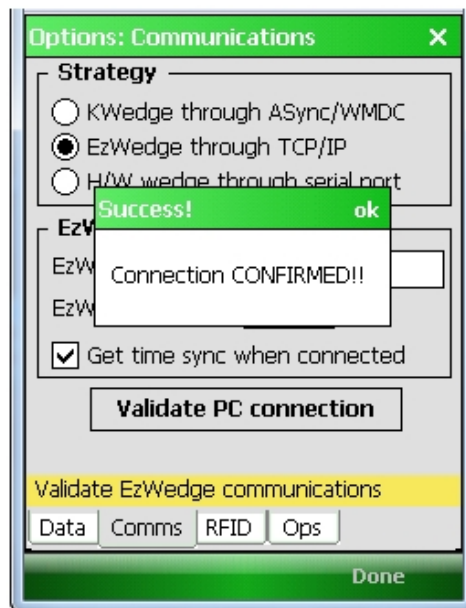
- Make sure everything (PC, Router, and CK3 and Dock) are powered up.
- Start up EzWedge on the PC.



10. Note the PC's IP address to enter into each device. It should be 192.168.10.2 if everything was attached properly.
11. On the CK3 Vista Menu open Options (password 00000) and click on the Comms tab.



12. Enter that same IP address into EzWedge IP on the CK3.
13. Click on Validate PC Connection to make sure everything is working and then save your settings and exit.



It's good to know that as long as all the CK3's have the same IP settings that they can work on any stations. This should be the same for any computer that you set this up on. So, you could use multiple download stations with Vista readers that normally are only used on one computer.